

UFD-Equity™ Series Fiberized Spray Applicators

UFD-Equity™ Series automatic adhesive applicators provide exceptional value and adhesive savings when compared to traditional applicator heads. With ITW Dynatec's patented Omega™ and Random Fiber™ patterns, UFD-Equity™ applicator heads provide up to 50% adhesive savings by using less glue while maintaining, if not improving, bond strength.

UFD-Equity™ Fiberized Spray Applicators:

- Applicators are modular and may be combined to produce segmented applicators of 1 to 200 ports.
- The most precise adhesive applicator for size and placement of multiple fiber size patterns in the industry.
- Consistent coat weight application eliminates ridges and valleys common when using swirl applicators.
- Patterns are not line-speed limited.
- Continuous pattern edge accuracy of ± 2 millimeter, depending on the adhesive.
- Vertical or horizontal nozzle mount HS Series modules available..
- Line-speed tracking and consistent coat weights regardless of variances of web-speed.
- Web width pattern changes without interruption when utilizing multiple solenoid inputs

**ADHESIVE
SAVINGS
UP TO 50%**

Simplicity

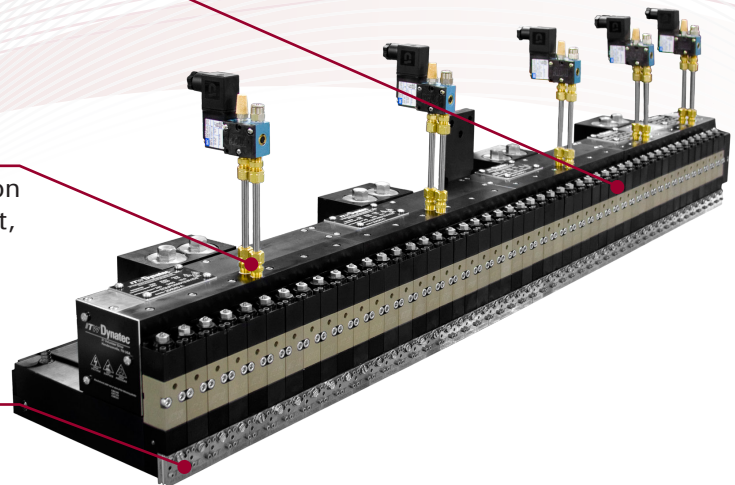
Stackable UFD applicators are modular and may be combined to produce segmented applicators of 1 to 200 ports.

Performance

Industry-trusted pneumatic operation ensures precise adhesive placement, accurate coat weights and is not line-speed limited.

Reliability

All stainless steel nozzle construction and internally filtered heated air give longer service life.



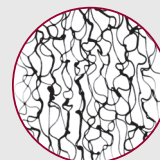
ITW Dynatec - UFD-Equity™ Series Applicators

The Dynatec Difference...

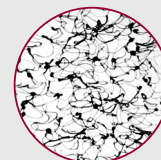
Patented Technology

Many companies say that they are innovators by providing techniques for laying down fiberized adhesive, but only ITW Dynatec has the patents to prove it (5,902,540 - 5,882,573 - 5,904,298). ITW Dynatec invented Laminated Plate Technology, which is used in all ITW Dynatec UFD™ nozzles and is the most effective way to lay down fiberized

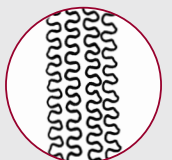
adhesive. This new product spawned many imitators, but none have been able to match the performance provided by ITW Dynatec's Laminated Plate Technology. When you use UFD™ Fiberized Spray technology from ITW Dynatec, you can be certain that you are using the best product on the market.



Random Fiber



Random Fiber

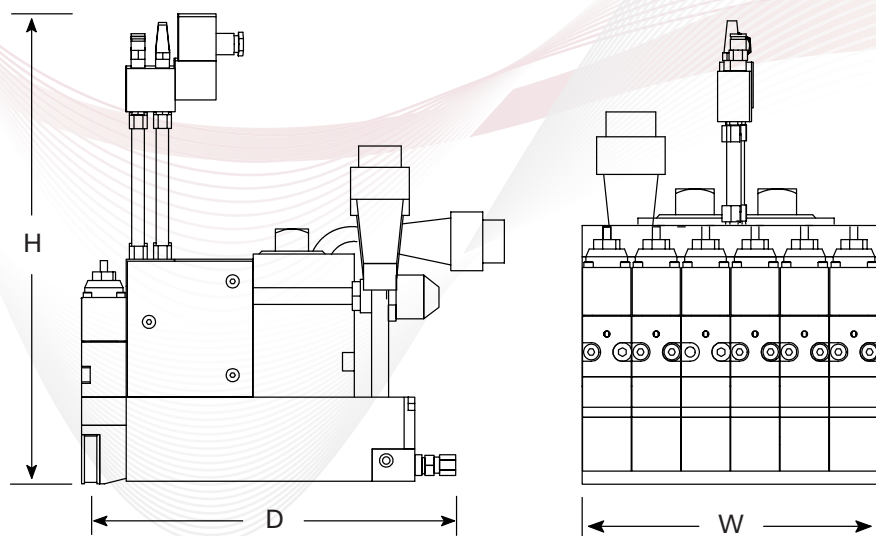


Omega

UFD-Equity™ Fiberized Spray Applicators

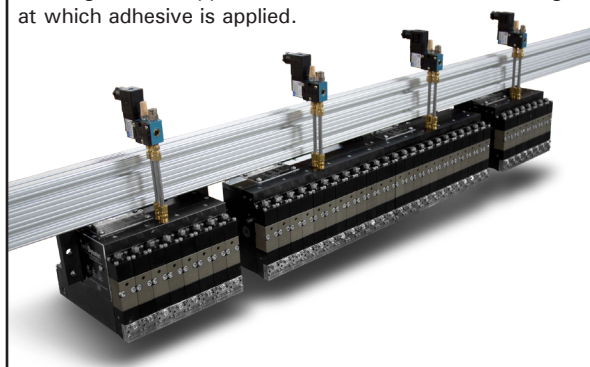
System	6 Port	8 Port	10 Port	12 Port	14 Port
Max. No. Modules	6	8	10	12	14
Spacing Between Nozzle Centers	25.2 mm	25.2 mm	25.2 mm	25.2 mm	25.2 mm
Temperature Range	38°C to 218°C (100°F to 425°F)	38°C to 218°C (100°F to 425°F)	38°C to 218°C (100°F to 425°F)	38°C to 218°C (100°F to 425°F)	38°C to 218°C (100°F to 425°F)
Warm-up Time	30 min. (cold start) 5 min. (module change)	30 min. (cold start) 5 min. (module change)	30 min. (cold start) 5 min. (module change)	30 min. (cold start) 5 min. (module change)	30 min. (cold start) 5 min. (module change)
Adhesive Viscosity	100 to 30,000 cps	100 to 30,000 cps	100 to 30,000 cps	100 to 30,000 cps	100 to 30,000 cps
Maximum Adhesive Pressure	68 bar (1000 psi)	68 bar (1000 psi)	68 bar (1000 psi)	68 bar (1000 psi)	68 bar (1000 psi)
Air Pressure Range	4.1 to 6.9 bar (60 to 100 psi)	4.1 to 6.9 bar (60 to 100 psi)	4.1 to 6.9 bar (60 to 100 psi)	4.1 to 6.9 bar (60 to 100 psi)	4.1 to 6.9 bar (60 to 100 psi)
Electrical Service Standard	200-240 VAC 1 Phase 50-60Hz	200-240 VAC 1 Phase 50-60Hz	200-240 VAC 1 Phase 50-60Hz	200-240 VAC 1 Phase 50-60Hz	200-240 VAC 1 Phase 50-60Hz
Req'd. Temp. Control Zones	2	2	2	2	4

Dimensions	6 Port	8 Port	10 Port	12 Port	14 Port
Height (H)	268.9 mm (9.31 in)	268.9 mm (9.31 in)	268.9 mm (9.31 in)	268.9 mm (9.31 in)	268.9 mm (9.31 in)
Depth (D)	222 mm (8.74 in)	222 mm (8.74 in)	222 mm (8.74 in)	222 mm (8.74 in)	222 mm (8.74 in)
Width (W)	151 mm (5.95 in)	200 mm (8 in)	250 mm (10 in)	300 mm (12 in)	350 mm (14 in)



UFD Easy Mount Brackets

The UFD Brand™ Mounting Brackets from ITW Dynatec allow for a simple and hassle-free setup of UFD Brand™ applicators and also provide a fast and easy way to adjust the height of the applicator to the substrate and the angle at which adhesive is applied.



ISO 9001
REGISTERED FIRM

ITW Dynatec

© 1/2010 ITW Dynatec

ITW Dynatec reserves the right to discontinue or change specifications, designs, materials and equipment without notice or obligation.

ASIA

ITW Dynatec Suzhou
Unit2, B1 Building
No.9 Weixin Road
SIP, Suzhou, China 215122
Telephone +86.512.6289.0620
Fax +86.512.6289.0621
dynatecsuzhou@itwdynatec.cn

AMERICAS

ITW Dynatec
31 Volunteer Drive
Hendersonville, TN 37075
Telephone 615-824-3634
+1.800.860.6150
Fax +1.615.264.5248
dynatec@itwdynatec.com

JAPAN

ITW Dynatec K.K.
Tsukimura Building 5th Floor
26-11, Nishikamata 7-chome
Ota-ku, Tokyo 144-0051, Japan
Telephone +81.3.5703.5501
Fax +81.3.5703.5505
info@itwdynatec.co.jp

EUROPE, AFRICA and MIDDLE EAST

ITW Dynatec GmbH
Industriestrasse 28
D-40822 Mettmann, Germany
Telephone +49.210.4915.0
Fax +49.210.491.5111
e.mail@itwdynatec.de

Visit us at www.itwdynatec.com